

GAJESKE, INC.

POLYETHYLENE SPECIALISTS

Conduit Catalog

Gajeske, Inc. is a master distributor of HDPE pipe, valves, fittings, and accessories for various utility piping applications.

Included, you will find a 5 Page catalog specific to Conduit piping.

Please contact your local **Gajeske** office today with any questions or pricing inquiries.

Contact

Toll Free: (877) 425-3754

DFW: (972) 314-8100

Houston: (713) 688-2728

Austin: (512) 278-1557

San Antonio: (210) 695-4440

Beaumont: (409) 838-5200

Safety/OQ: (817) 320-3560

Gajeske@Gajeske.com

Applications

- Telecom
- Power Utility
- Electrical
- Cable TV
- Datacom



GAJESKE, INC.

POLYETHYLENE SPECIALISTS

HDPE Conduit

Pipe

- Smooth Wall
- Wave & Ribbed
- Corrugated
- Cable In Conduit
- Tenable Duct
- Figure Eight Duct
- Pest Duct
- Micro Duct



Fittings

- HDPE Couplers
- Aluminum Couplers
- Comfit Couplers
- Reverse Threaded Couplers
- Barbed Couplings
- Compression Couplings
- Wrap Around Clamps
- Electrofusion Couplings



Striping Available



GAJESKE, INC.

POLYETHYLENE SPECIALISTS

PVC Conduit

Pipe

- Schedule 40 PVC
- Schedule 80 PVC
- 1/2" thru 6" Available

Carlon



Fittings

- Expansion Fittings
- Fabricated Fittings
- Standard Couplings
- Sleeve Couplings
- Swedge Couplings
- Risers
- Female Adapters
- Male Terminal Adapters
- Threaded Adapters
- Box Adapters
- Reducer Bushings
- Fabricated Reducers
- Plugs & Caps
- Deep Socket Available

Carlon® PVC Conduit Repair System



Reamer



Reamer Kit



Coupling



Male Threaded Adapter



Plug

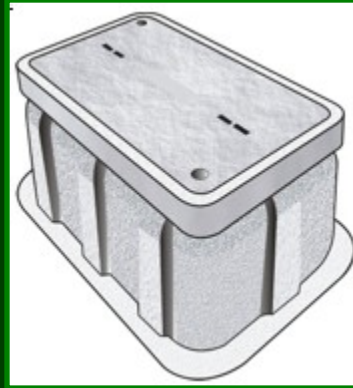
GAJESKE, INC.

POLYETHYLENE SPECIALISTS

Handholes & Boxes

Common Uses

- Handhole
- Junction Box
- Pull Box
- Valve Box
- Meter Box
- Splice Box
- Manhole
- Traffic Controller Box
- Traffic Signal Box



Polymer Concrete

- Lighter and stronger than concrete
- Hex or Pentahead bolt patterns
- Customized Logos
- Straight or Flared Wall

Fiberglass Reinforced Polymer (FRP)

As the size of your enclosure increases, so does the overall weight and installation cost. FRP is a lightweight, high strength alternative to conventional concrete.



PVC Junction Boxes

- Strong & Durable
- Suitable for exposure up to 60°C
- Available with or without mounting flanges
- Custom sizes, windows, or panel mounts available

GAJESKE, INC. Accessories

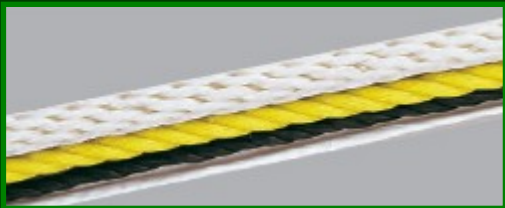
POLYETHYLENE SPECIALISTS



Detectable Mule Tape



Pull Head End Caps



Pull Rope



Caution Tape

Marking Paint



Safety Equipment



Pipe & Cable Locators

Carlton® Cements, Primers and Sealers

